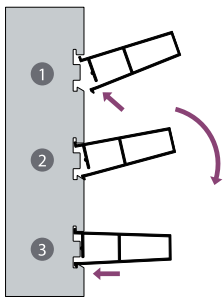


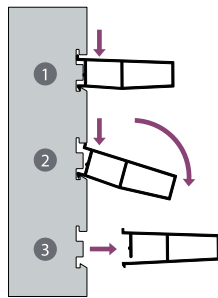
BRISE SOLEIL FIXE V-5



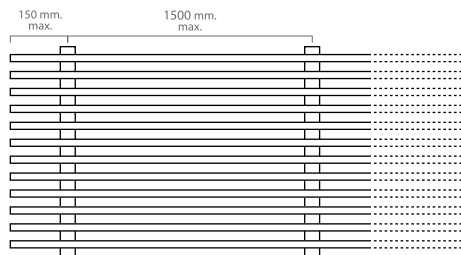
INTRODUCTION



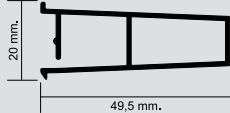
EXTRACTION



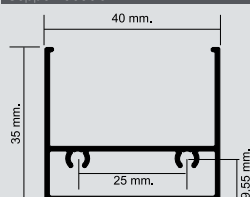
DISTANCE DE POSE



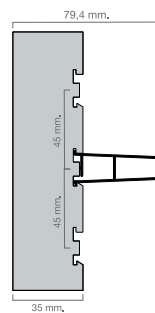
Profilé lame V-5



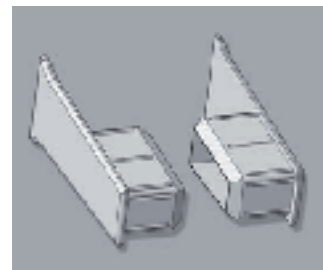
Support double



INSTALLATION



EMBOUTS OPTIONNELS



NOTE : POUR LA FIXATION DES SUPPORTS, UTILISER VIS EN ACIER INOXYDABLE OU ACIER TRAITÉ AVEC DELTAONE OU SIMILAIRE.

CARACTERISTIQUES TECHNIQUES

Brise Soleil V-5	
N° de lames par ml.	22,2
Poids m²	10 kg.
Largeur maximum en mm. (entre supports)	1000